

Throttle / throttle check valves type BV700 NG 6 up to 700 bar up to 25 l/min

Features

- High-precision control.
- Adjustable while under pressure.
- Leak-free in closed condition.
- Flow in either direction.
- Intermediate plate NG 6 to DIN 24340.
- Counter nut for flow rate limitation.



BIERI
Hydraulik

Throttle valves

- for inlet and outlet throttling
- as screw/in cartridge
- as intermediate plate valve

Throttle check valves

For applications where the flow shall be throttled in one direction and be unthrottled in the other direction.

Controllable throttle valves are used for the adjustment of certain flow rates. The moving speed of a consumer can be influenced with the valves.

Technical data

Hydraulic fluid	mineral oil according to DIN 51524 (other fluids on request)
Fluid temperature range	NBR: -30 to 80 °C FPM: -20 to 80 °C
Ambient temperature range	-30 to 50 °C
Viscosity range	5 to 400 cSt (optimal: 10 - 68 cSt)
Porting	NG 6 according to DIN 24340/ ISO 4401 / GETOP RP 121 H
Operating pressure max. connection P, A, B	700 bar
Pressure admissible max. connection T	350 bar
Flow rate max.	25 l/min
Filtration	according to NAS 1638, class 6 or ISO/DIN 4406 15/12
Weight	see dimension drawing
Material / surface treatment	steel parts: galvanized, black cromized cartridge: steel-corrosion resistant adjusting knob: cast iron

Throttle / throttle check valves type BV700

NG 6 up to 700 bar up to 25 l/min

Accessoires

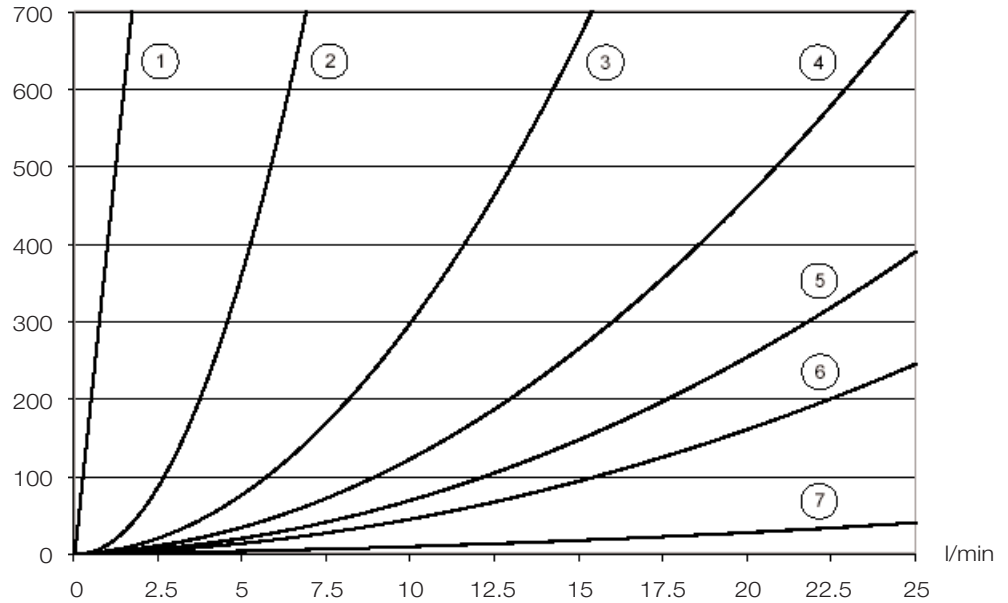
IFor each valve the following is included:
 4 pieces O-rings 9,25 x 1,78 mm
 90°ShA part no. 900195

Tie bolts / fixing screws and subplates
 see technical data sheet AP / RP

Operating instructions see BA-BV700

Characteristic intermediate plate valve

Measured at $v = 32 \text{ cSt}$, $T = 40 \text{ }^\circ\text{C}$ bar

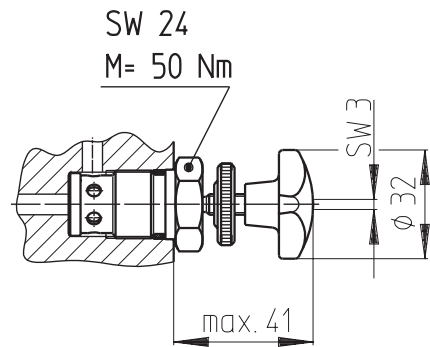


Screw/in cartridges

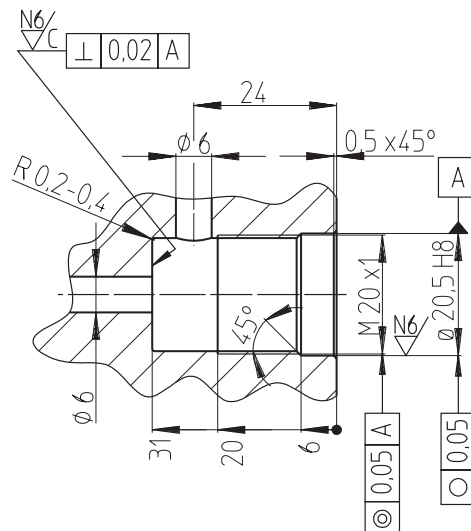
Design revision A
 Weight 0,12 kg

Type

SD700-6-E-25-P-A*00
 SD700-6-E-25-V-A*00



Bore dimension



Throttle / throttle check valves type BV700

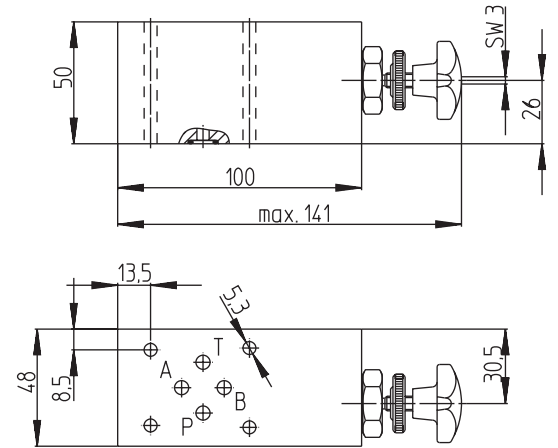
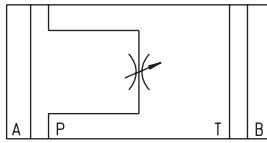
NG 6 up to 700 bar up to 25 l/min

Throttle valves

Design revision A
Weight 1,9 kg

Type

SD700-6-PP-25-P-A*00
SD700-6-PP-25-V-A*00

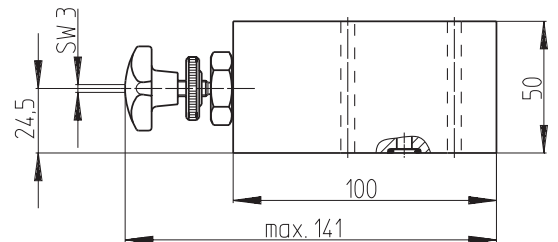
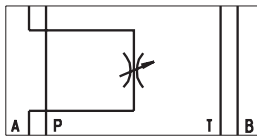


Throttle valves

Design revision A
Weight 1,9 kg

Type

SD700-6-AA-25-P-A*00
SD700-6-AA-25-V-A*00

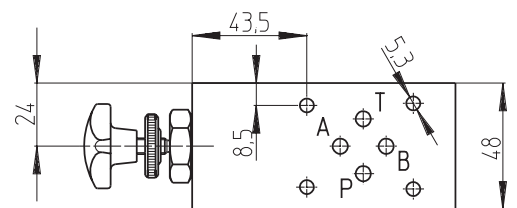
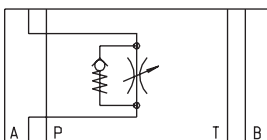


Throttle check valves

Design revision A
Weight 1,9 kg

Type

SDRV700-6-AA-25-P-A*00
SDRV700-6-AA-25-V-A*00



Throttle / throttle check valves type BV700

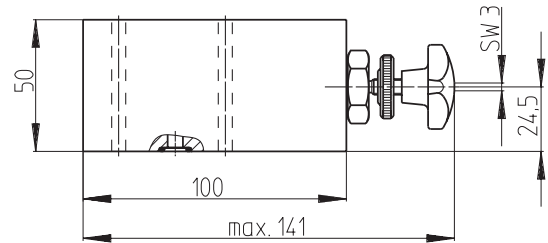
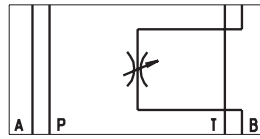
NG 6 up to 700 bar up to 25 l/min

Throttle valves

Design revision A
Weight 1,9 kg

Type

SD700-6-BB-25-P-A*00
SD700-6-BB-25-V-A*00

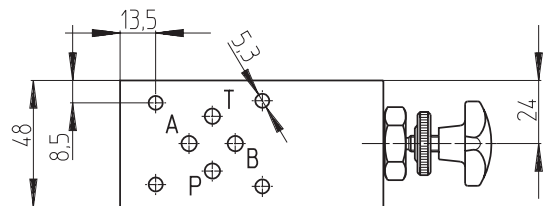
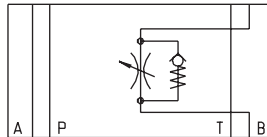


Throttle check valves

Design revision A
Weight 1,9 kg

Type

SDRV700-6-BB-25-P-A*00
SDRV700-6-BB-25-V-A*00



Throttle check valves

Design revision A
Weight 2,6 kg

Type

SDRV700-6-AABB-25-P-A*00
SDRV700-6-AABB-25-V-A*00

